



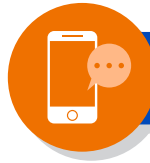
Listed are frequently requested items or goods and services by previous applicants.

# I have a **SCI** and I have a hard time...



## getting around my home.

- Exercise therapy
- Home access modifications
- Lift systems
- Physical therapy
- Therapeutic massage
- Wheelchair, accessories



## using technology.

- Computer/Tablet, printer
- Door opener
- Environmental control unit
- Smart phone
- Voice Recognition software



## taking care of my hygiene.

- Bathroom access modification
- Shower chair/commode
- Grab bars
- Personal care/support services



## accessing a vehicle.

- Driver evaluation
- Hand controls
- Portable ramp
- Transfer chair
- Vehicle modifications
- Wheelchair lift



## managing daily activities.

- Case management
- Counseling
- Day support
- Health & Wellness activities
- Respite care
- Therapy (OT, S/L, vision)



## getting to appointments.

- Attendant care
- Modified van
- Taxi, Uber, etc
- Public transit
- Vehicle



Listed are frequently requested items or goods and services by previous applicants.

# I have a **TBI** and I have a hard time...



## with balance or walking.

- Aquatic (swimming) therapy
- Neuromuscular therapy
- Physical therapy
- Standing frame
- Walker



## reading or learning.

- Academic tutoring
- Cognitive therapy
- Computer/Tablet
- Neuropsychological testing
- Speech/Language therapy



## being around other people.

- Behavioral therapy
- Case management
- Counseling
- Family therapy
- Life skills therapy
- Psychosocial therapy



## with vision and memory.

- Glasses
- Smart Phone
- Tablet
- Vision therapy
- Voice recognition software



## taking care of my hygiene.

- Case management
- Counseling
- Day support
- Health & Wellness activities
- Respite care
- Therapy (OT, S/L, vision)



## getting to appointments.

- Attendant care/driver
- Portable ramp
- Public transit
- Taxi, Uber, etc.
- Vehicle
- Vehicle modifications